



Software for Glass



A+W BUSINESS PRO

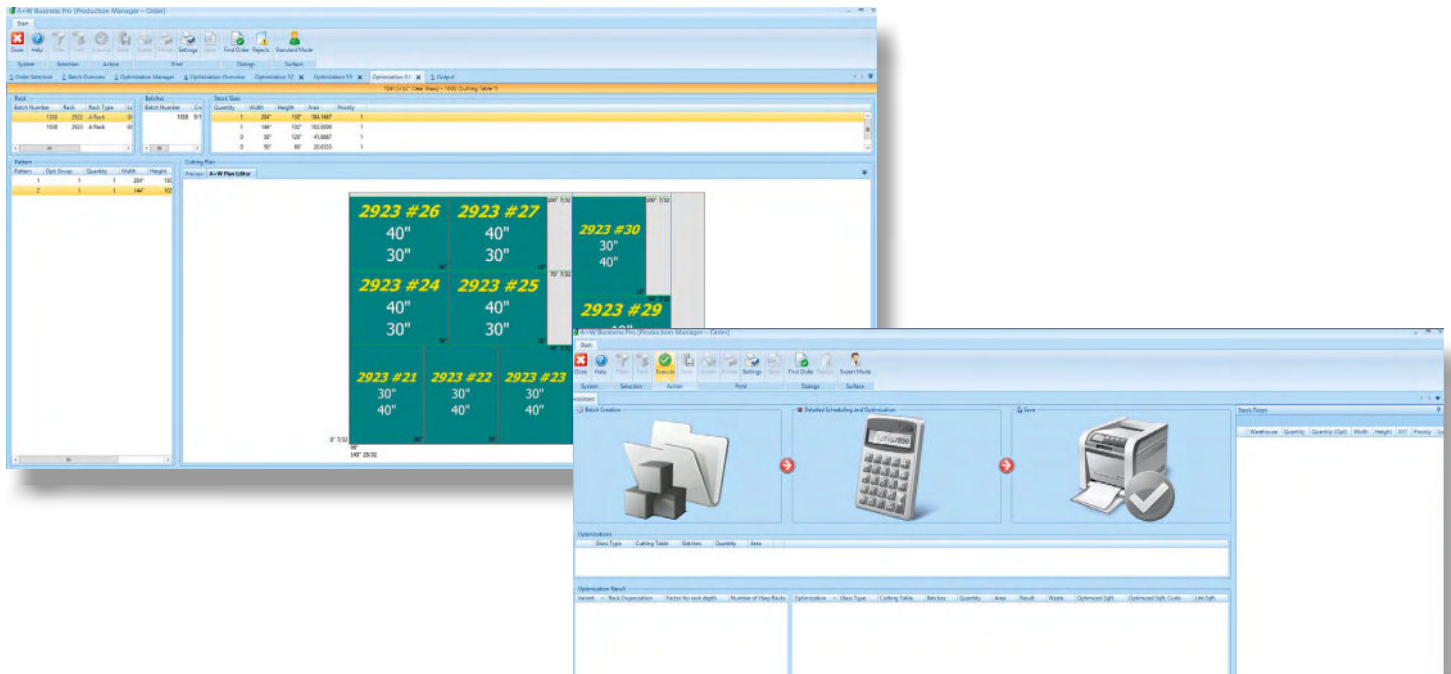
Integrated Production Control.

A+W Business Pro is a fully integrated solution of the latest generation for small and medium-sized companies. The process from quotation to dispatch has never been easier!

www.a-w.com



Clear, simple, clever



The “Pro” in the name:

A+W Business Pro is a professional and cost-effective entry-level solution for small and medium-sized companies where order processing and production planning are completely integrated.

Business:

With the commercial part of the integrated solution (A+W Business), you can handle the entry of quotations, orders, credits, complaints, and delivery notes and manage orders and inquiries; you can also take control of other company areas (e.g. warehouse, purchasing, dispatch, etc.)

Using the integrated statistics module, you can create numerous customer and product-specific queries and evaluations. This helps you manage your product portfolio, as well as your purchasing and sales prices.

The system offers extensive technical support for the processing of quotations and orders. All elements are immediately displayed true-to-scale and graphically during entry in order to prevent entry errors and speed up the entire process. Price calculation with A+W Business is very flexible and allows division into standard prices and customer-specific terms.

The integration of the A+W Logistics Optimizer expands the ERP system to include complete route planning and control (incl. delivery app for the driver) and rounds out the entire package of possibilities in A+W in the areas of dispatch and logistics.

The possibility of incorporating a Webshop – A+W iQuote (G) – offers you the ability to create an additional 24/7 online sales channel and to manage it directly from your central system.

Modules:



A+W iQuote (G)



A+W Analytics



A+W CAD Designer (Bars)



A+W CAD Designer (Shapes)



A+W Logistics Optimizer



A+W Capacity Planner

Your benefits:

- Perfect entry-level solution: fully-integrated commercial and production solution, which thanks to many possible expansions, grows with you
- Easy, quick production processing and release with wizard function
- Low time and cost commitment thanks to intelligent and easy production control (e.g., production papers and standardized storage organization)
- Secure, correct stock figures thanks to reports from production
- Easy and quick output of production papers and NC code for connected machines
- Easy and adapted functions in the areas of warehouse and breakage management (additional, expanded functions using the A+W Barcode Manager (EL))
- Reduction of direct waste thanks in part to the latest optimization algorithms and intelligent expansions, such as A+W Shape Optimizer
- Reduction of real waste thanks to the efficient handling of residual lites and breakage
- Technical drawings (e.g., DXF files and CAD templates for complex glass designs) using simple and graphically-supported technical order entry system



Pro(duction):

Order data is available immediately for production planning. Thanks to the integrated wizard function, the process of batch creation and optimization, on through to production release can be completed with a single mouse-clicks.

The user can switch to "expert mode" at any time and influence the results directly. The cut optimization per batch and glass type is based on the latest algorithms and, thanks to the intelligent variation possibilities for storage space depth, selection of various stock sizes and residual plates, delivers very good results.

With the optional expansion A+W Capacity Planner (EL), you can determine production costs, processing and delivery dates – based on your real machine capacities – and write these back to the order all while communicating them to customers. This is how you can increase delivery reliability and customer satisfaction.

Thanks to the possibility of incorporating the easy, yet high-performance scanner solution A+W Barcode Manager (EL), you will achieve significant improvements and savings potential in stock and breakage management.

If your company grows more, there is an easy upgrade option to the premium solution "A+W Production," which enables a complete takeover of the existing and non-production-specific transaction data.



A+W Barcode Manager



A+W Realtime Optimizer



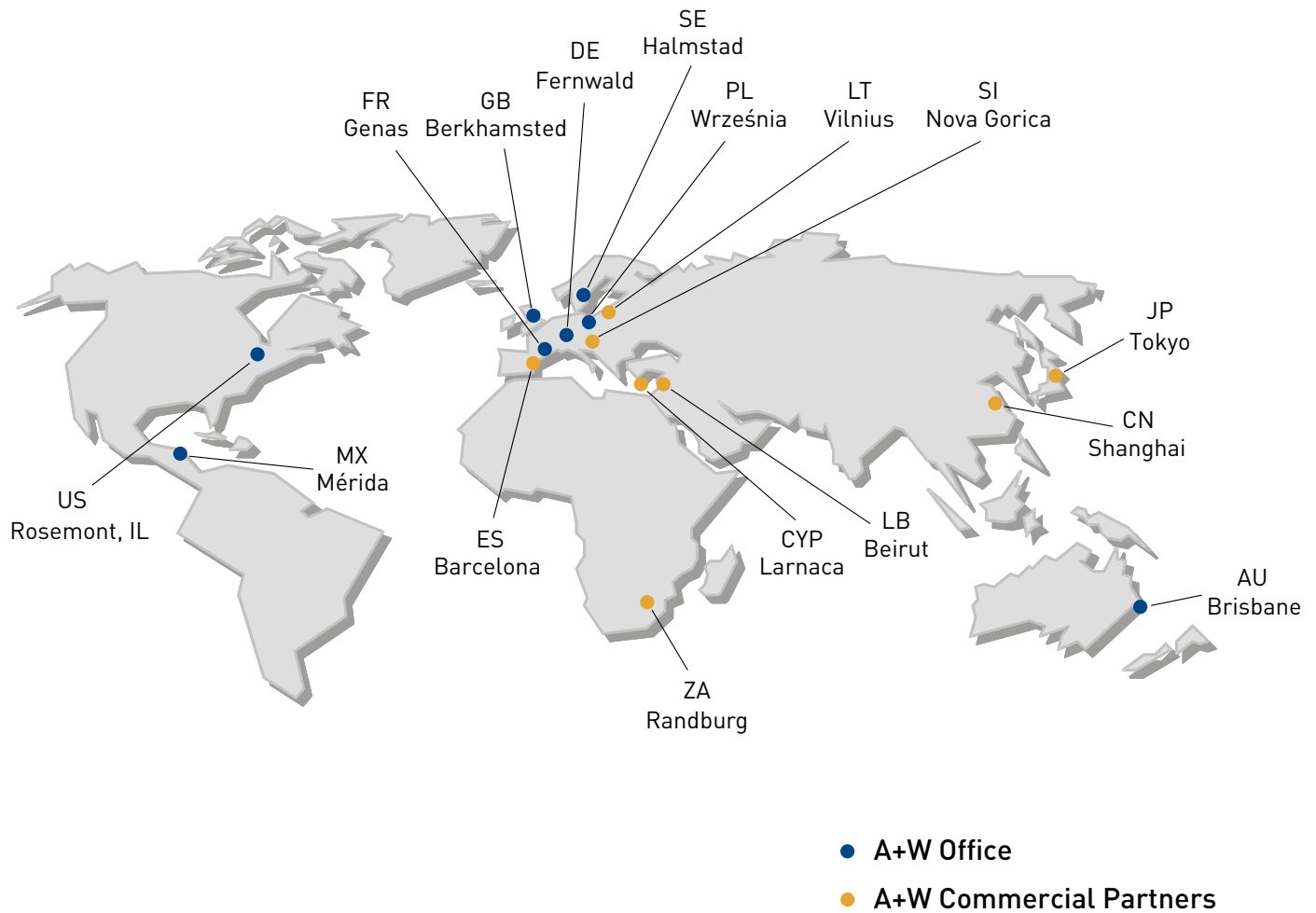
A+W Production Terminal



A+W Shape Optimizer

A+W Software USA Inc.
10275 West Higgins Road, Suite 250
Rosemont, Illinois 60018 USA
Phone + 1 312 470 6645 (Main)
Phone + 1 888 254 2915 (Toll Free)
Fax + 1 847 948 9425
usa@a-w.com
www.a-w.com

A+W Software Australia
37 Brandl Street
Eight Mile Plains
Queensland, 4113
Australia
Phone + 61 1800 849 233
australia@a-w.com
www.a-w.com



A+W has over 40 years of global market leadership in software for the flat-glass, window, and door industries for small-, medium-, and large-sized companies.

Our long-term experience is your benefit.

A+W – Your Trusted Advisor

Software for Glass, Windows & Doors