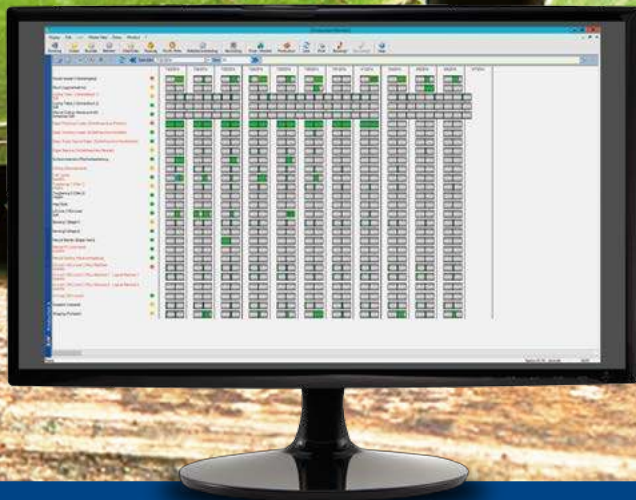




Clarity
Software for Glass



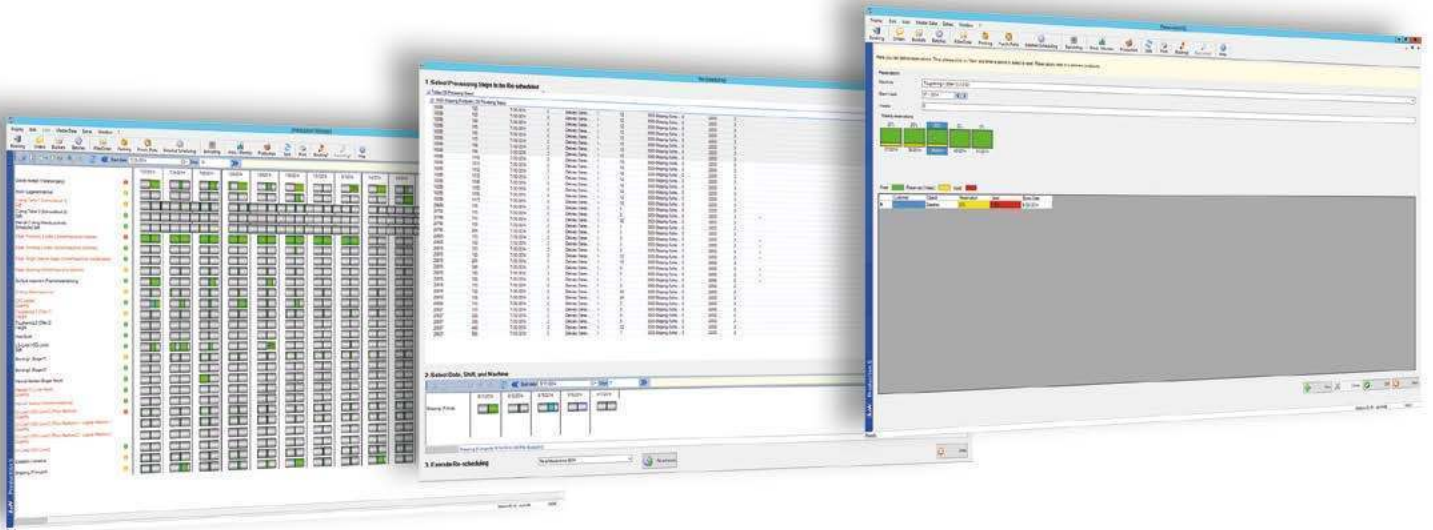
A+W CAPACITY PLANNER

Everything exactly planned and coordinated.

Avoid bottlenecks and overload, consider technical restrictions and shorten the throughput times of your orders: A + W Capacity Planner does this automatically for you, but of course you can manually intervene at any time according to your requirements. Graphical surveys provide a clear view. Keep an eye on the possibilities and costs of your production.

www.a-w.com

Keep a grip on production capacities



The A+W Capacity Planner handles the planning and control of existing production capacities, in direct and permanent synchronisation with the capacities reserved for the order stock.

This allows early detection of production bottlenecks and intervention into the planning results. In addition, there is a check of the desired delivery date. If the desired delivery date is not possible or if it cannot be adhered to, then the system first checks whether it is possible to produce on alternative resources. If there should be no alternative machines or if their capacity is not sufficient, then the system calculates the earliest possible alternative delivery

date taking into consideration the route schedule from the ERP system/department.

Planning and calculation are done on the basis of the current and/or expected production utilisation (reservations) per machine, unit or work area. The basis is the master data stored per machine in the form of times, the shift or deployment plans per company or per machine, and the assigned costs per machine and technology. All scheduled orders are assigned to the existing capacities (machines and dates) – according to the glass types and processings defined in the order.

At the same time, the production costs per work run and for all alternative means of production are determined in detail. Only the selected technology with its costs and if necessary the recalculated dates are reported to the ERP system, and the data is updated in the order.

Detailed evaluations per area, per machine, and per order item are possible. A central capacity monitor assists with the control of utilisation, allowing quick intervention in case of capacity bottlenecks, overruns, and work backlogs.

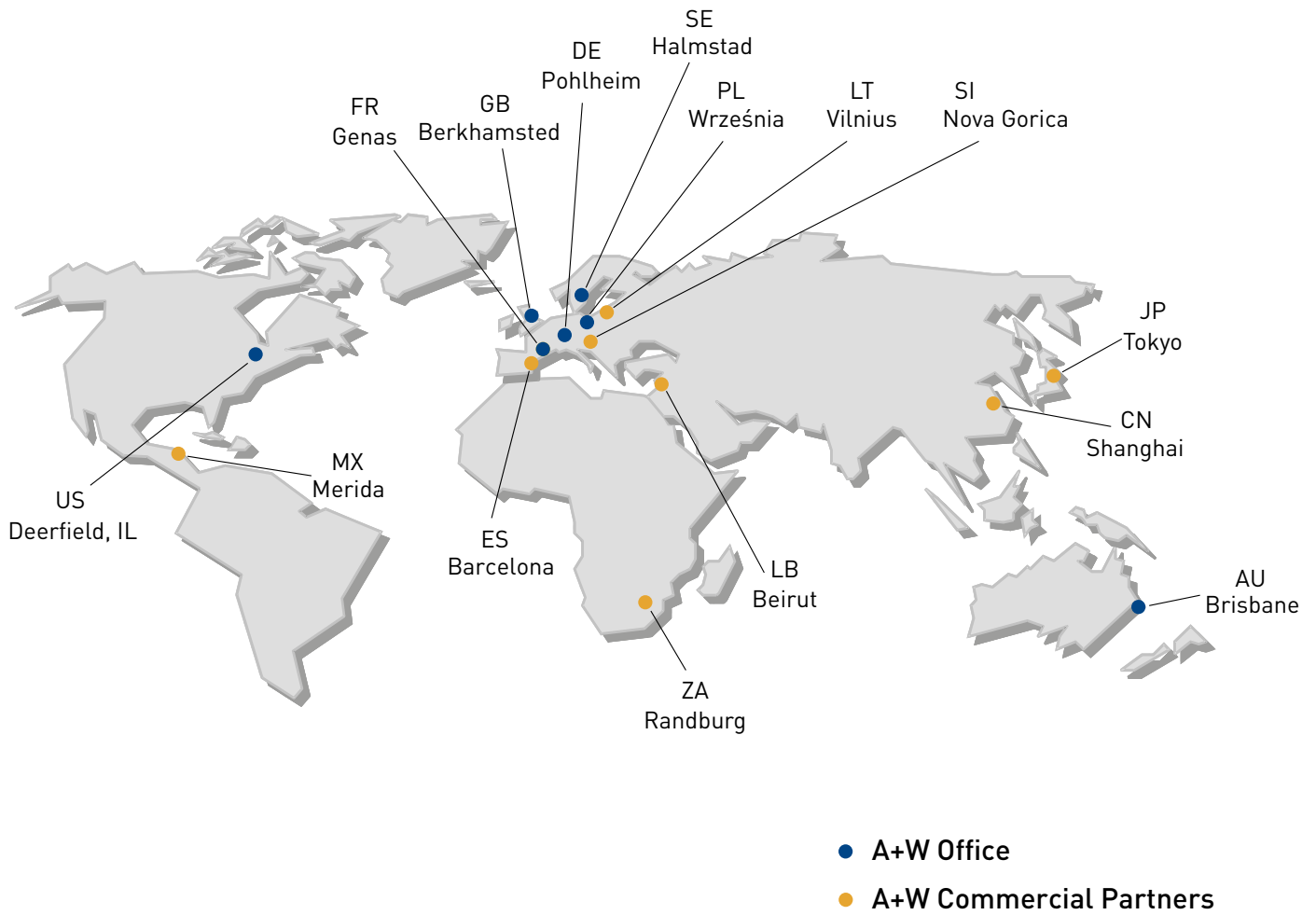


A simple and intelligent rescheduling helps you with required manual intervention into current production planning and to transfer individual work processes to alternative machines or another shift due to machine maintenance.

In connection with the A+W Barcode Manager, daily capacities are displayed in the production monitor according to production progress. This add-on is only available in connection with A+W Production.

Your benefits:

- Calculation and display of free capacities and machine utilisation
- Calculation and reporting of production dates and costs
- Free, formula-based machine and work process restrictions
- Automatic rescheduling of delivery dates in case of insufficient capacities during dispatch
- Automatic load distribution on machines based on work processes
- Possibilities for reservations for special projects and/or customers
- Creation and maintenance of campaigns for specific work processes such as coating or screen printing
- Graphic display of production progress (using PDC bookings via A+W Barcode Manager or A+W Production Terminal)



A+W – 40 years of global market leadership in software for the flat-glass, windows and doors industry – for small, medium-sized and enterprise companies.

Our long-term experience is your benefit.

A+W – Your Trusted Advisor