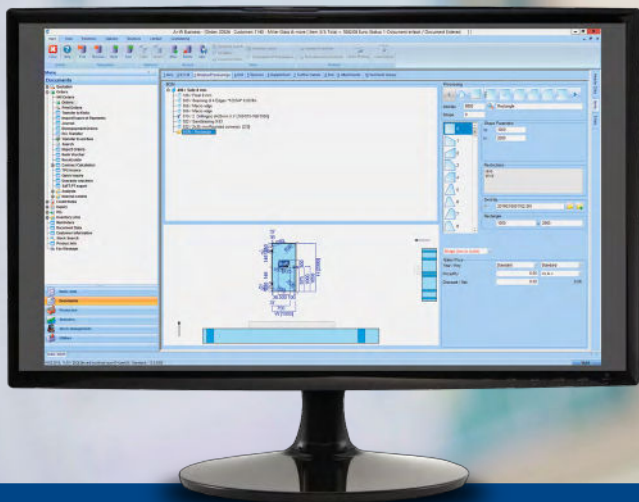




Software for Glass



A+W BUSINESS

Even more ergonomic.

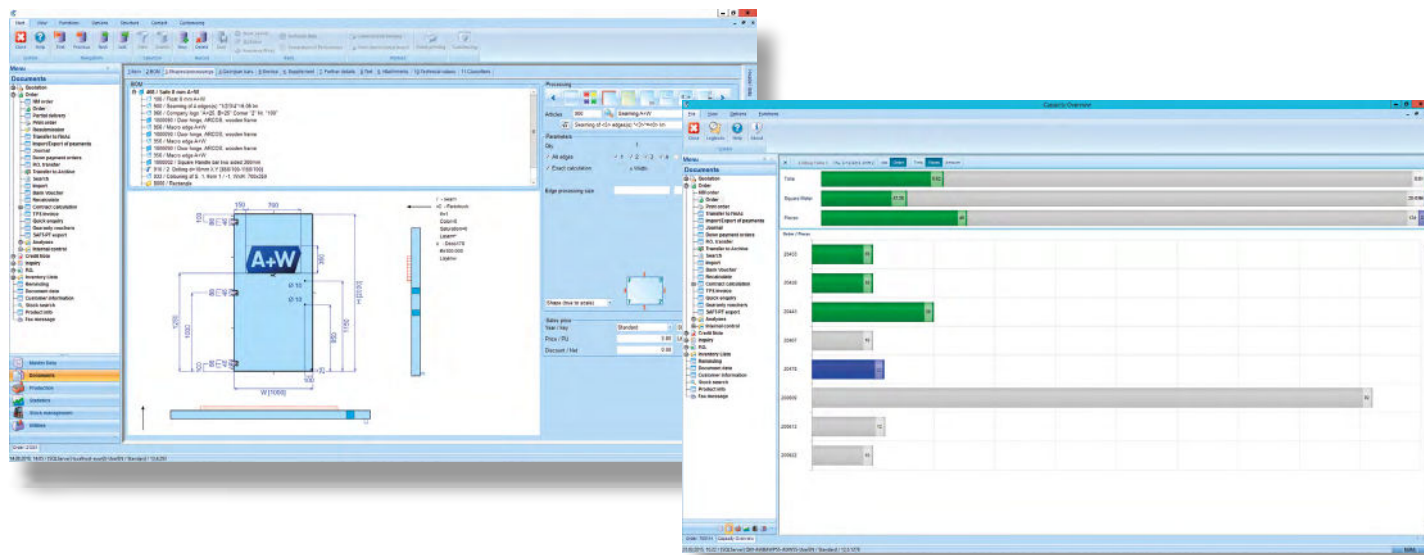
A+W Business is a new-generation ERP system for the flat glass industry. Quotations, order processing, purchasing, shipping, and invoicing have never been easier!

www.a-w.com



A+W Business

The perfect solution that grows with you



A+W Business functionalities

A+W Business is a complete ERP system for small and medium-sized companies in the flat glass industry.

The A+W commercial solution allows not just the entry of quotations, orders, credit notes, complaints, delivery notes, and the management of purchase orders and enquiries, but also control of other company areas (e.g. stock, purchasing, despatch, etc.). The main functions are master data management, quotation creation, order processing, the creation of partial deliveries and complaints, and all associated documents and evaluations.

With its graphic interface, A+W Business is easy and quick to use and it simplifies all company-internal processes relating to order processing.

The system offers extensive technical support for the processing of quotations and orders. Elements are displayed true-to-scale during entry in order to prevent entry errors and speed up the entire process. Price calculation with A+W Business is very flexible and allows division into standard prices and customer-specific terms.

Calculation is done automatically, but it can be checked and changed manually.

If you are using the A+W Production suite, production information is also available in A+W Business; customer enquiries about delivery date, production utilisation, and production process can be answered quickly and precisely.

Optionally, the A+W Business package can be expanded to include an EDI solution, expanded CAD functionalities, internal rack management, a Microsoft Outlook connection, as well as interfaces to various financial accounting and document management systems. In addition, evaluations in the form of reports and statistics are created as decision-making tools for management.

Modules:



A+W iQuote (G)



A+W Analytics



A+W CAD Designer (Bars)



A+W CAD Designer (Shapes)



A+W Logistics Optimizer



The integration of the A+W Logistics Optimizer expands the ERP system to include complete route planning and control (incl. delivery app for the driver) and rounds out the entire package of possibilities in A+W in the areas of despatch and logistics.

Stock management is supported and expanded with a simple yet state-of-the-art and high-performance Win CE scanner app.

Thanks to the many possibilities for modular expansion and customising, A+W Business is very scalable – the system adjusts to your needs and grows with you.

Your benefits:

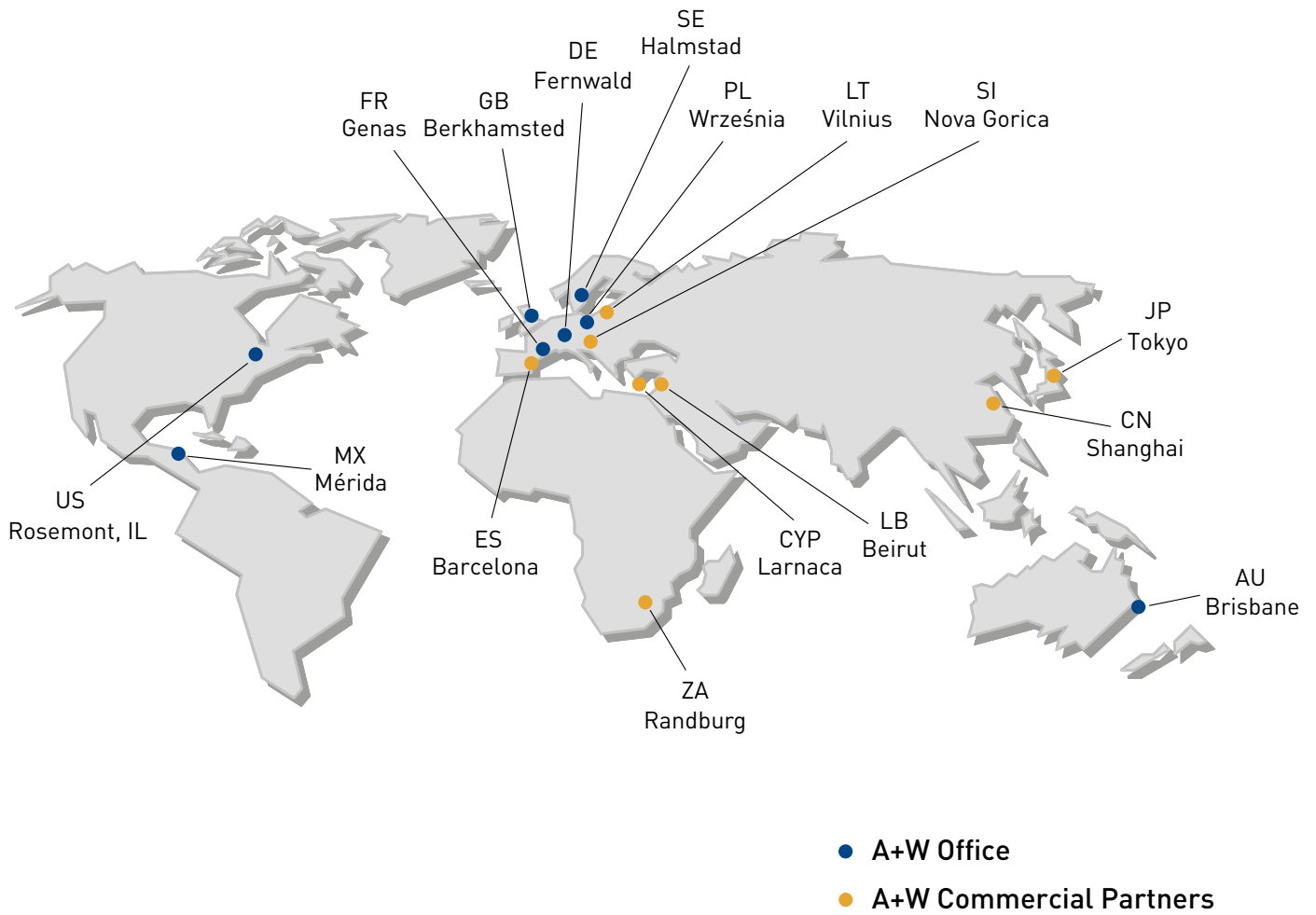
- Time and cost savings thanks to automation of the processing of orders and quotations
- Prevention of errors and quick processing thanks to graphical user interface
- Use of a standardised system in different countries and for users who speak different languages thanks to Unicode capability
- Increased quality and customer satisfaction due to online overviews and enquiries about production utilisation, production progress during order entry, and delivery status in the course of route monitoring
- System adjustment to your company's changing requirements thanks to modular structure and possible expansions such as the A+W Logistics Optimizer
- Possibility of incorporating technical drawings (for example, DXF files, CAD templates for complex glass designs) using easy and graphically-supported technical order entry



A+W Barcode Manager



A+W Capa View



A+W – over 40 years of global market leadership in software for the flat-glass, windows and doors industry – for small, medium-sized and enterprise companies.

Our long-term experience is your benefit.

A+W – Your Trusted Advisor