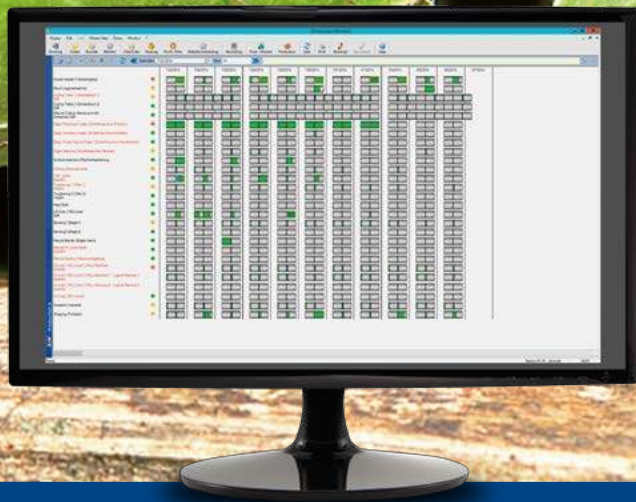




Clarity
Software for Glass



A+W CAPACITY PLANNER

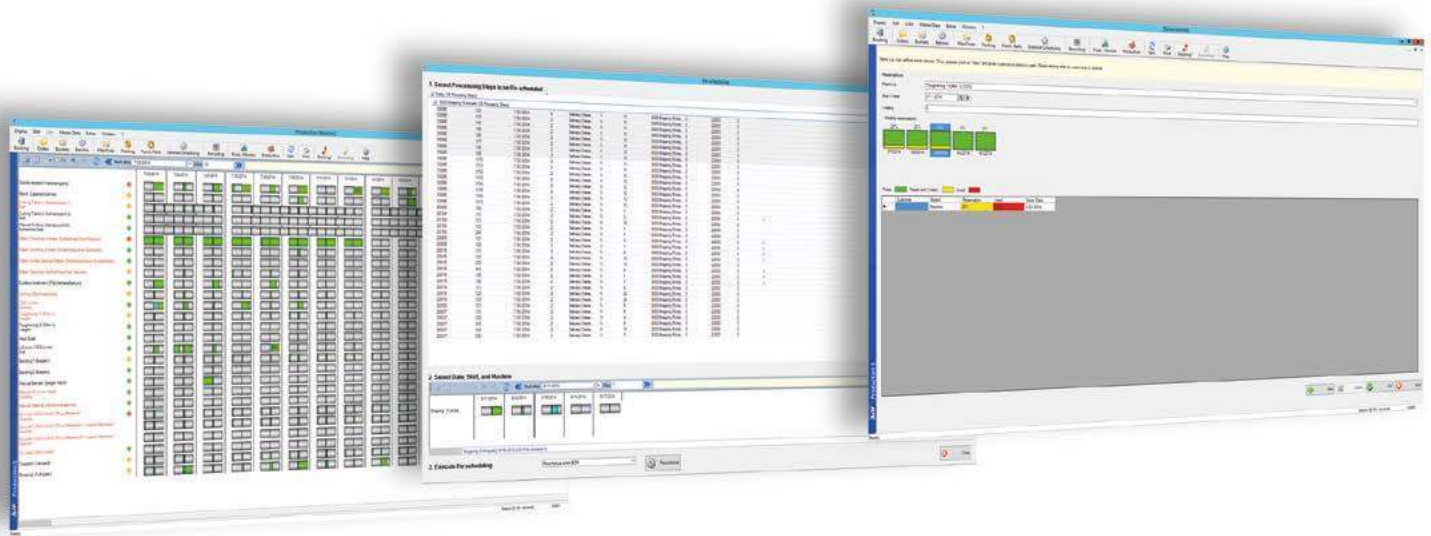
Everything exactly planned and coordinated.

Avoid bottlenecks and overload, consider technical restrictions and shorten the throughput times of your orders: A + W Capacity Planner does this automatically for you, but of course you can manually intervene at any time according to your requirements. Graphical surveys provide a clear view. Keep an eye on the possibilities and costs of your production.

www.a-w.com



Keep a grip on production capacities



The A+W Capacity Planner handles the planning and control of existing production capacities in direct and permanent synchronization with the capacities reserved for the order stock.

This allows for early detection of production bottlenecks and disruption as well as a tracking of the desired delivery date. If the desired delivery date cannot be met, the system first checks whether it is possible to produce using alternative resources. If no alternative machines are available, or if their capacity is not sufficient, the system then calculates the earliest possible alternative delivery date.

Planning depends on the current and/or expected production utilization per machine, unit, or work area. Calculation is based on master data stored per machine such as times, the shift or deployment plans per company or per machine, and the assigned costs per machine and technology. All scheduled orders are assigned according to the order of glass types and processings.

Also determined are production costs — per work run and for all alternative means of production. Only the selected technology is reported into the ERP system, and the data is updated accordingly.

Detailed evaluations per area, per machine, and per order item are possible. A central capacity monitor assists in controlling utilization, allowing quick intervention in case of capacity bottlenecks, overruns, and work backlogs.

This simple and intelligent system helps in case manual intervention into current production planning is necessary, as well as the transfer of individual work processes to alternative machines, or any other shift caused by machine maintenance.



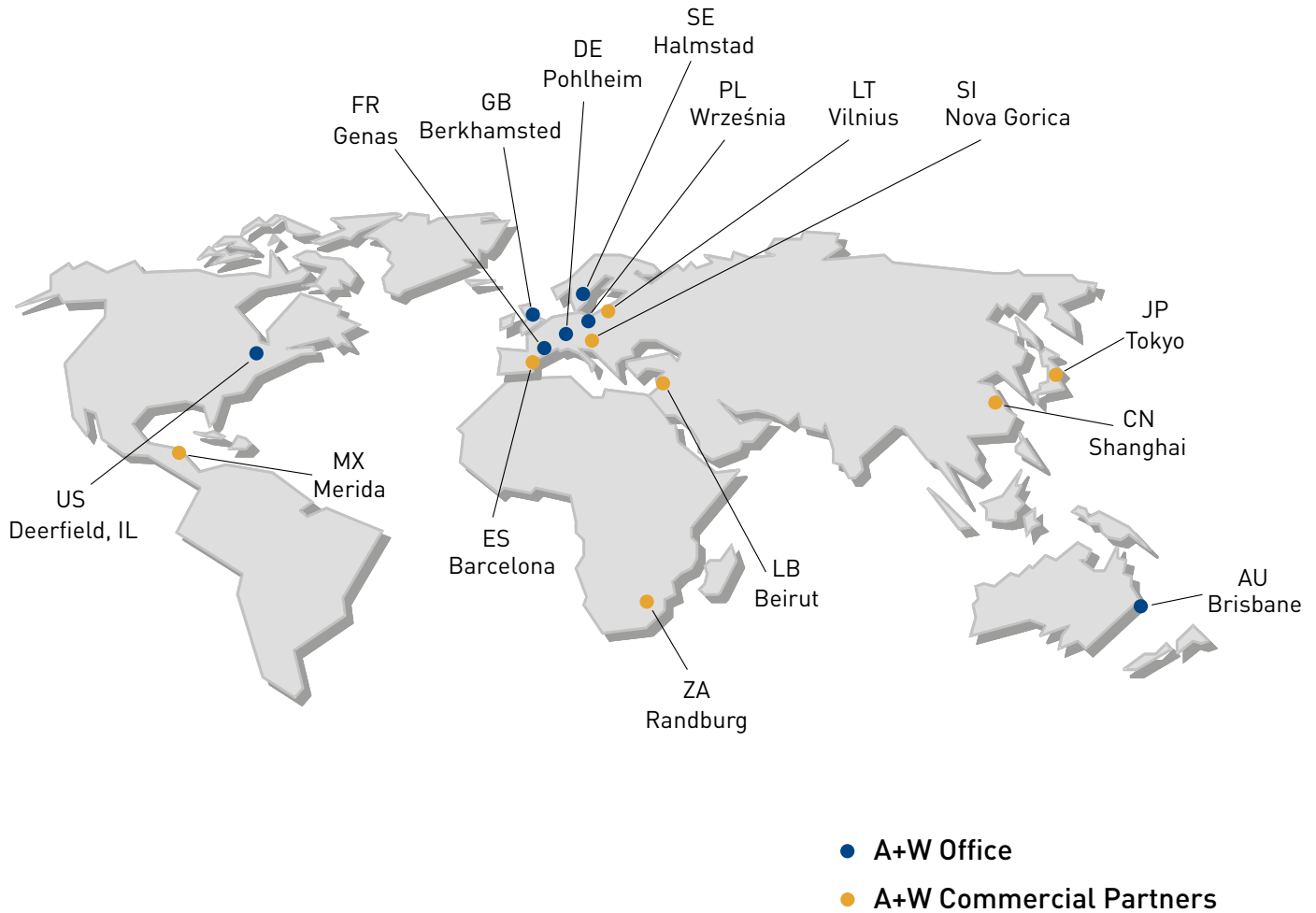
In connection with the A+W Barcode Manager, daily capacities are displayed in the production monitor according to production progress. This add-on is only available in connection with A+W Production.

Your benefits:

- Calculation and display of free capacities and machine utilization
- Calculation and reporting of production dates and costs
- Free, formula-based machine and work process restrictions
- Automatic rescheduling of delivery dates in case of insufficient capacities during dispatch
- Automatic load distribution on machines based on work processes
- Possibilities for reservations for special projects and/or customers
- Creation and maintenance of campaigns for specific work processes such as coating or screen printing
- Graphic display of production progress (using PDC bookings via A+W Barcode Manager or A+W Production Terminal)

A+W Software USA Inc.
One Parkway North, Suite 400-S
Deerfield, IL 60015 USA
Tel. + 1 312 470 6645 (Main)
Tel. + 1 888 254 2915 (Toll Free)
Fax + 1 847 948 9425
usa@a-w.com
www.a-w.com

A+W Software Australia
37 Brandl Street
Eight Mile Plains
Queensland, 4113
Australia
Tel. + 61 1800 284 978
australia@a-w.com
www.a-w.com



A+W – 40 years of global market leadership in software for the flat-glass, windows and doors industry – for small, medium-sized and enterprise companies.

Our long-term experience is your benefit.

A+W – Your Trusted Advisor

A+W Clarity Software for Glass